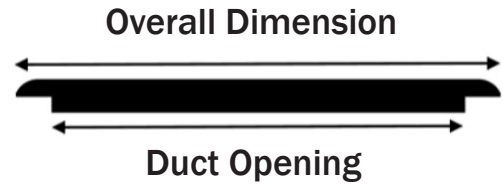
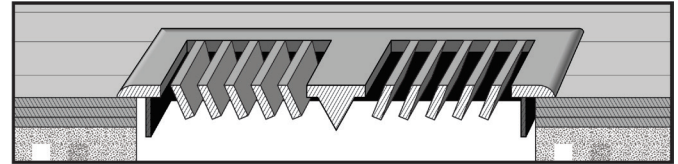


Surface Vent Profiles



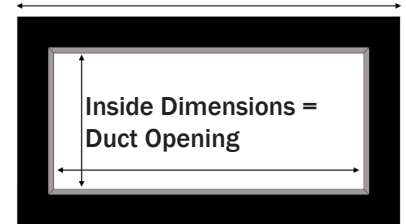
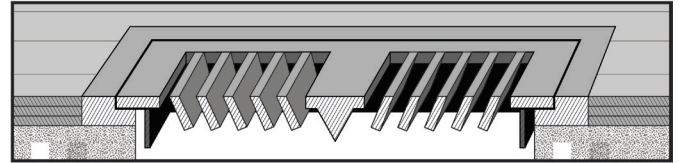
Surface mount vents are designed with a solid, self-rimming lip to drop into the duct opening with the overlap resting on the floor, covering any rough edges from installation.

Easy glide or box damper available for standard sizes.

* Please Note: Cutout size may be larger than duct opening

ORDER SIZE (Duct Opening Inches)	OVERALL DIMENSIONS
2-1/2" x 10"	3-15/16" x 11-7/16"
2-1/2" x 12"	3-15/16" x 13-7/16"
2-1/2" x 14"	3-15/16" x 15-7/16"
4" x 8"	5-7/16" x 9-7/16"
4" x 10"	5-7/16" x 11-7/16"
4" x 12"	5-7/16" x 13-7/16"
4" x 14"	5-7/16" x 15-7/16"
6" x 10"	7-7/16" x 11-7/16"
6" x 12"	7-7/16" x 13-7/16"
6" x 14"	7-7/16" x 15-7/16"

Flush Vent Profiles

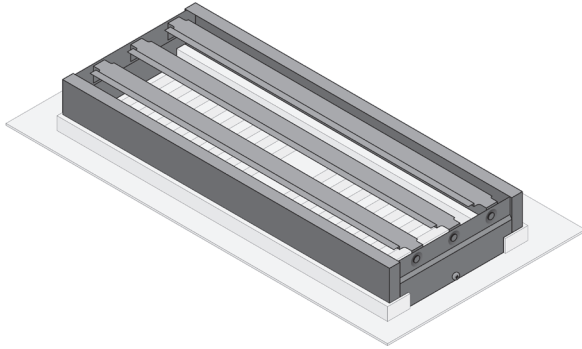


Flush mount vents are a slim, flush style with the cleanest look possible. Installed the same time as the floor it sits flat on the subfloor. The frame is installed permanently while the vent is removable to allow duct cleaning.

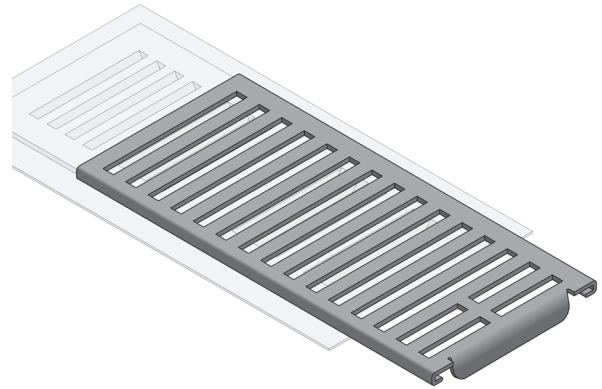
Easy glide or box damper available for standard sizes.

ORDER SIZE (Duct Opening Inches)	OVERALL DIMENSIONS
2-1/2" x 10"	5" x 11-13/16"
2-1/2" x 12"	5" x 14-1/8"
2-1/2" x 14"	5" x 16"
4" x 8"	6-3/4" x 10-1/4"
4" x 10"	6-3/4" x 12-1/4"
4" x 12"	6-3/4" x 14-1/2"
4" x 14"	6-3/4" x 16-1/2"
6" x 10"	9" x 12-1/4"
6" x 12"	9" x 14-1/4"
6" x 14"	9" x 16-1/4"

Damper Profiles



Metal Box Damper



Easy Glide Damper



Metal Box Damper



Easy Glide Damper



Metal Box Damper



Easy Glide Damper

Custom Vent Options

FLUSH MOUNT WITH FRAME



Flush mount with frame - order by duct size opening. Custom units' overall dimensions are 4" more than the duct opening size. Standard sizes available online.

SURFACE MOUNT



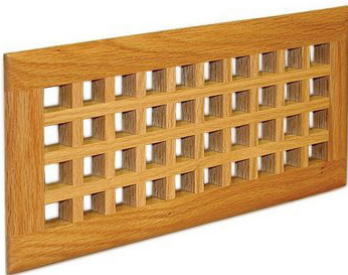
Surface mount - order by duct size opening. Standard sizes available online.

FLUSH MOUNT NO FRAME



Flush mount no frame - order by duct size opening. Custom units' overall dimensions are 2" more than the duct opening size.

EGGCRATE SURFACE MOUNT



Eggcrate surface mount - for applications in floors, walls or ceilings of any thickness, where maximum air flow is desired. Order by exact duct opening size.

EGGCRATE WITH FRAME & FRAMELESS



This traditional eggcrate style is available in flush with frame (4" overall more than duct opening) and flush with no frame (2" overall more than duct opening).

WALL MOUNT/COLD AIR RETURN



This one-directional vent provides a clean, continuous flow of your architectural millwork. The downward angled louvers conceal the duct work.

WALL BASE VENT



Designed to cover duct openings near the base board. Adjustable damper available on standard sizes. Standard sizes = 15" x 5" x 3 1/4" & 18" x 5" x 3 1/4"

TOE KICK/UNDER CABINET



Designed to complement your cabinet or vanity with a natural, finished look. Each toe kick includes one vent with predrilled holes and mounting screws. Adjustable damper available on standard sizes. Standard sizes = 2 1/2" x 12" & 2 1/2" x 14"

OUTLET COVER



This hand-crafted wood cover conceals unsightly and potentially dangerous floor outlets when not in use. The frame is installed permanently while the cover is removable. Only available in overall outer dimensions of 6" x 4 13/16"